

# SPECIFICATION APPROVAL SHEET

Customer Name :

No. :

Customer Part Name :

Date : 2023/04/21

Customer Model No. :

Signature of Customer Approval

Part Name : DYNAMIC SPEAKER

Dsg'd :

Model No. : MS303006CT-SW001

Chk'd : Jason

Revision : 1

App'd : Arlang

**MARQUESS<sup>®</sup>**

MARQUESS CO., LTD

1F,NO.123, SEC. 3, HUAN NAN. RD., PING CHEN DIST.,

TAOYUAN CITY, TAIWAN, R. O. C.

TEL : +886-3-4287262

FAX : +886-3-2842353

HTTP://www.marquess.com.tw



## 1. CONDITION

The test conditions unless otherwise specified shall be Refer to IEC 268-1.

1-1 Ambient temperature : 15°C - 35°C , preferably at 20°C

1-2 Relative humidity : 25% to 75%

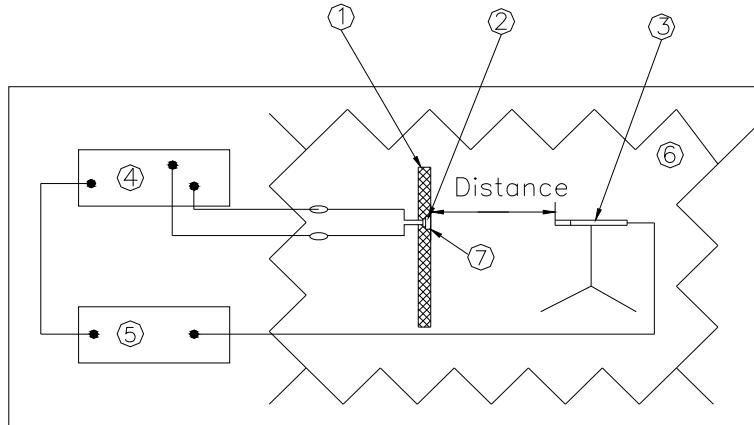
1-3 Air pressure : 86kPa - 106kPa

## 2. ELECTRICAL AND ACOUSTICAL SPECIFICATION

2-1	Dimension	∅ 30 * 5.0H [mm]
2-2	Weight	4.5 [g]
2-3	Rated Input Power	0.5 W
2-4	Short Term Max Input Power	1.0 W
2-5	Rate Impedance	50Ω ± 15% at 1KHz
2-6	Sound Pressure Level (S.P.L.)	93 dB ± 3dB at 2Vrms / 0.1M (0.8K 、 1.0K 、 1.2K 、 1.5KHz AVG)
2-7	Resonance Frequency (FO)	600Hz ± 20%
2-8	Polarity	When a positive DC current is applied to the terminal marked (+) , diaphragm shall move forward
2-9	Frequency Response curve	Refer to the next page FIG. 1

### 3. SPEAKER FREQUENCY RESPONSE CURVE

#### 3.1 Block Diagram For Measurement Method



1	Baffle plate	IEC 268-5 BAFFLE	2	Speaker unit	MS303006CT-SW001
3	Microphone	CLIO	4	Analyzer	CLIO
5	Amplifier	CLIO	6	Anechoic Room	
7	Auxiliary Tool	S-3001-01			

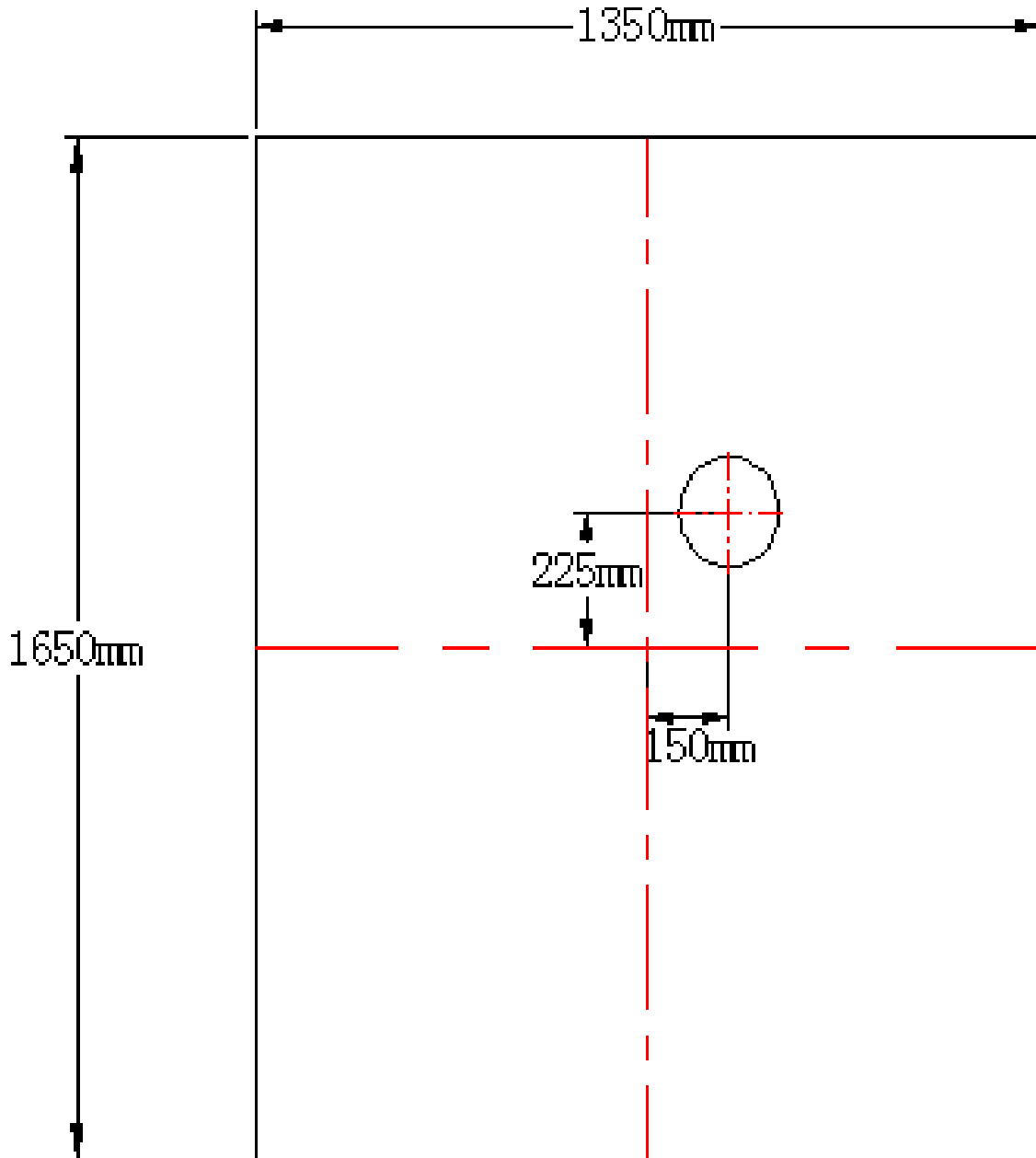
#### 3.2 Frequency Response Curve



FIG. 1

#### 4. DYNAMIC SPEAKER TEST BAFFLEPLATE

##### 4.1 IEC 268-5 BAFFLE



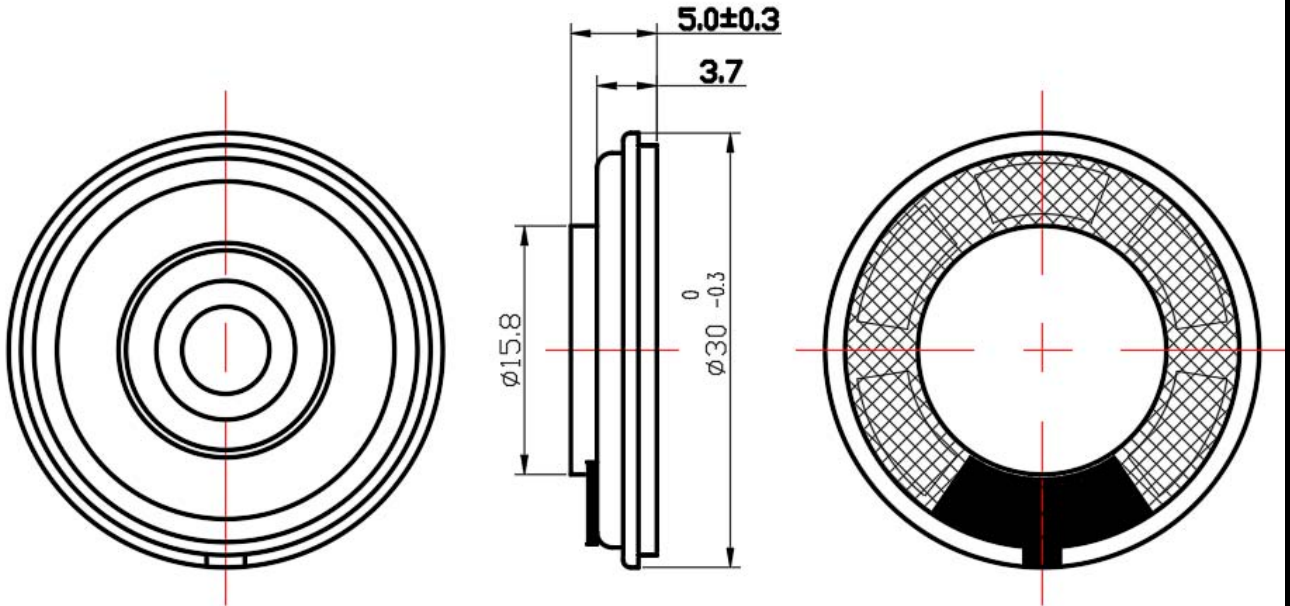
## 5. ENVIRONMENTAL TEST

After reliability test , all samples must be meet the requirements specified in section 2-5 ~ 2-8. Unless otherwise noted , the recovery period shall be 6 hours at least before performance testing.

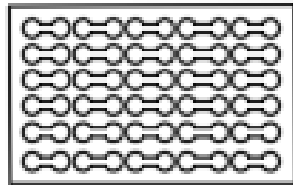
5-1	Operating Life Test	Input power : 0.5W WHITE noise Duration : 24 hours
5-2	Short Term Max Power	Input power : 1.0W WHITE noise Duration : ----- 1 minute on 1minute off 10 times
5-3	Heat Resistance Test	Temperature : +75°C ± 2°C Duration : 96 hours
5-4	Cold Resistance Test	Temperature : -20°C ± 2°C Duration : 96 hours
5-5	Thermal Cycle Test	Thermal shock: +25°C ± 3°C ↔ +65 °C ↔ +25°C ± 3°C Duration: 0.5 hour 6hours 0.5 hour Cycles: 5cycles
5-6	Humidity Test	Temperature : +40°C ±3°C Humidity : 90% to 95% Duration : 96 hours
5-7	Drop Test	Speaker shall be packed in the carton and dropped the concrete floor(H:1m) 1corner:1 time,3 ridges: 1 time each,6 faces: 1 time each
5-8	Operating Temperature	-20°C ~ +75°C
5-9	Storage Temperature	-20°C ~ +75°C

## 6. Dimensions (UNIT: mm)

Tolerance:±0.2mm



**7. PACKING (Unit:cm)**



50PCS/ 盘

50PCS\*24 盘 共1200PCS

