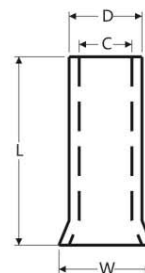


# CORD END TERMINALS

管型裸端头

- Material
- Terminal Body: Copper
- Plating: Tin

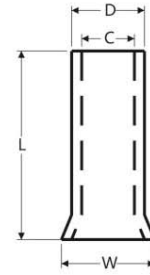


型号 ITEM NO.	尺寸 DIMENSIONS(mm)			
	L	W	D	C
EN0206	6.0	1.5	1.1	0.8
EN0208	8.0			
EN0306	6.0			
EN0308	8.0	1.7	1.3	1.0
EN0506	6.0			
EN0508	8.0			
EN0510	10.0			
EN0512	12.0	1.9	1.5	1.2
EN7506	6.0			
EN7508	8.0			
EN7510	10.0			
EN7512	12.0	2.2	1.7	1.4
EN1006	6.0			
EN1008	8.0			
EN1010	10.0			
EN1012	12.0	2.5	2.0	1.7
EN1018	18.0			
EN1508	8.0			
EN1510	10.0			
EN1512	12.0	3.3	2.6	2.3
EN1518	18.0			
EN2506	6.0			
EN2508	8.0			
EN2510	10.0	3.9	3.2	2.8
EN2512	12.0			
EN2518	18.0			
EN4009	9.0	4.7	3.9	3.5
EN4012	12.0			
EN4018	18.0			
EN6010	10.0	4.7	3.9	3.5
EN6012	12.0			
EN6018	18.0			

# CORD END TERMINALS

管型裸端头

- Material
- Terminal Body: Copper
- Plating: Tin



型号 ITEM NO.	尺寸 DIMENSIONS(mm)			
	L	W	D	C
EN10-12	12.0	5.8	4.9	4.5
EN10-16	16.0			
EN10-18	18.0			
EN10-20	20.0			
EN10-25	25.0			
EN16-12	12.0	7.2	6.2	5.8
EN16-16	16.0			
EN16-18	18.0			
EN16-20	20.0			
EN16-22	22.0			
EN16-25	25.0			
EN25-12	12.0	9.1	7.9	7.5
EN25-16	16.0			
EN25-18	18.0			
EN25-22	22.0			
EN25-25	25.0			
EN36-16	16.0	10.2	8.7	8.3
EN35-20	20.0			
EN35-25	25.0			
EN50-12	12.0	12.7	10.9	10.3
EN50-18	28.0			
EN50-22	22.0			
EN50-25	25.0			
EN70-22	22.0	15.8	14.3	13.5
EN70-25	25.0			
EN70-32	32.0			
EN95-25	25.0	17.3	15.6	14.8
EN95-30	30.0			
EN95-34	34.0			
EN120-30	30.0	20.2	17.7	16.7
EN120-34	34.0			
EN120-38	38.0			
EN150-32	32.0	23.0	20.6	19.6
EN150-40	40.0			
EN185-32	32.0	23.9	21.4	20.2
EN185-40	40.0			