

SMD 3225

Feature

- A small surface mount type crystal unit, especially suited for small-sizing requirements
- Ultra compact and thin. (3.2×2.5×0.6mm typ.)
- Tight Tolerance 10 ppm available.
- Application: Bluetooth ; Mobile phone ; W-LAN ; Office Automation ; Audio & Visual.
- Meets the requirements for re-flow profiling using lead-free solder.



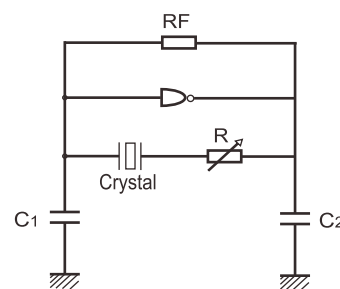
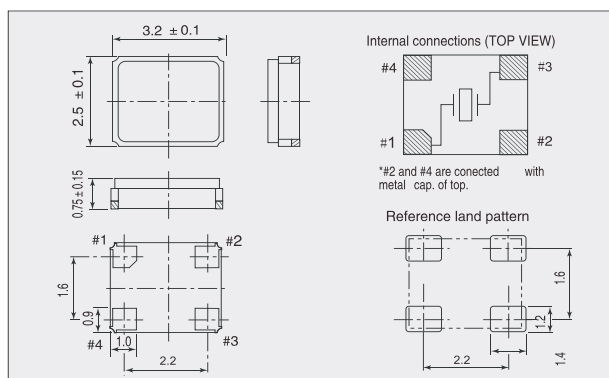
Specifications

RoHS Compliant REACH Compliant

Item	Model	RFW3 Series	
Frequency Range		12 to 54MHz	
Oscillator Mode		Fundamental	
Frequency Tolerance (25±3°C)		±10PPM~±50PPM	
Temperature Characteristics (with reference to +25°C)		±10PPM~±50PPM	
Operating Temperature Range		-20 to 70°C	
Load Capacitance		8pF~32pF, Series	
Storage Temperature Range		-40 to 85°C	
Drive Level		10µW(max. 100µW)	
Equivalent Series Resistance		Frequency Range (MHz)	Equivalent Series Resistance max. [Ω]
		12 to 13	100
		13 to 19.5	80
		19.5 to 27	60
		27 to 54	50

The above specifications are standard for this RFW products. Custom-made Spec. such as CL and Temp. Stability are also available. Please contact us with your enquiries.

Outline Drawing



$$CL = \frac{C1 \cdot C2}{C1 + C2} + 3 \sim 7 \text{ pf}$$

Ordering Information

Part Number Guide

RFW X'TAL	3 Package Size (mm)	10 Load Capacitance (pF)	B Freq. Tol. @25°C (ppm)	B Frequency Stability (ppm)	C Temp. Range (°C)	1 Oscillator Mode	- Dash	Freq. (Mhz)
	3.2*2.5*0.6 L=3.2 W=2.5 H=0.6	XX=xpf	A:±5 B:±10 O:±12 P:±15 C:±20 D:±25 E:±30 G:±50	A:±5 B:±10 P:±15 C:±20 D:±25 E:±30 G:±50	I: -10~60 C: -20~70 L: -40~85 M: -25~70 N: -30~70	1:AT Fundamental 3:3rd Overtone		XX.XXXXXX

Frequency Stability Vs. Temperature Range

Temp.(°C)	Ppm	±5	±10	±15
-10 ~ +60		☺	☺	☺
-20 ~ +70		+	☺	☺
-40 ~ +85		☹	+	+

☺ Standard + Available(case by case) ☹ Not Available

Example RFW310BBC1-26.000000MHz
Crystal unit, RoHS Compliant, 3.2*2.5mm; CL=10pF; Freq. Tolerance: +/-10ppm;
Freq. Stability: +/-10ppm; Operating Temp. Range: -20~70°C; AT Fundamental;
Freq. 26.000000MHz.
**Not all combinations of options are available.